

When an injury happens:

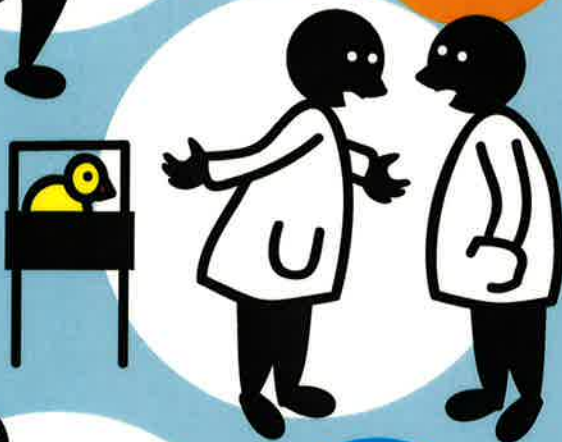
1 RESPOND

Obtain First Aid immediately and secure scene according to Laboratory Specific procedure. Call 911 for acute emergencies or proceed to the Health Center as necessary.



2 REPORT

Report injury to your Supervisor immediately. Report the incident to ESSR at www.essr.umd.edu, click on the *Incident Reporting and Investigation* button.



3 REVIEW

Review or investigate incident to determine causes. Take corrective action to prevent further incidents.



If you feel that any issue has an **animal welfare** implication, please **contact the IACUC** at iacuc@umd.edu.